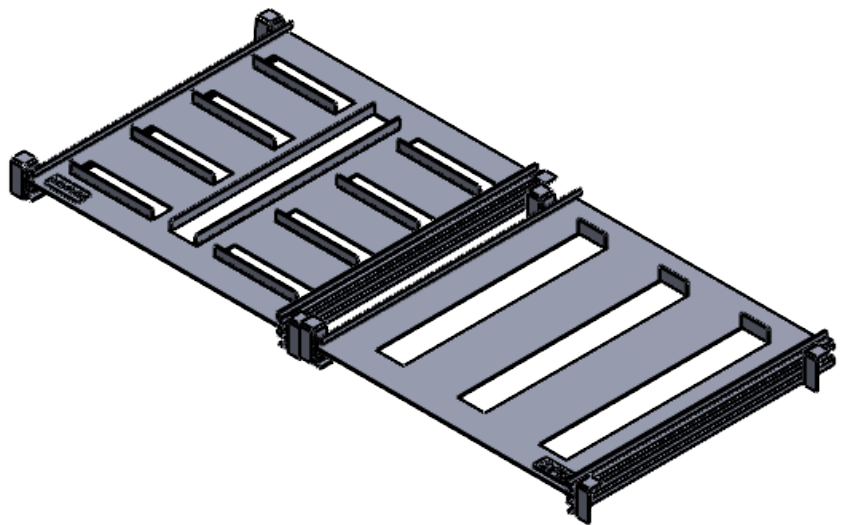
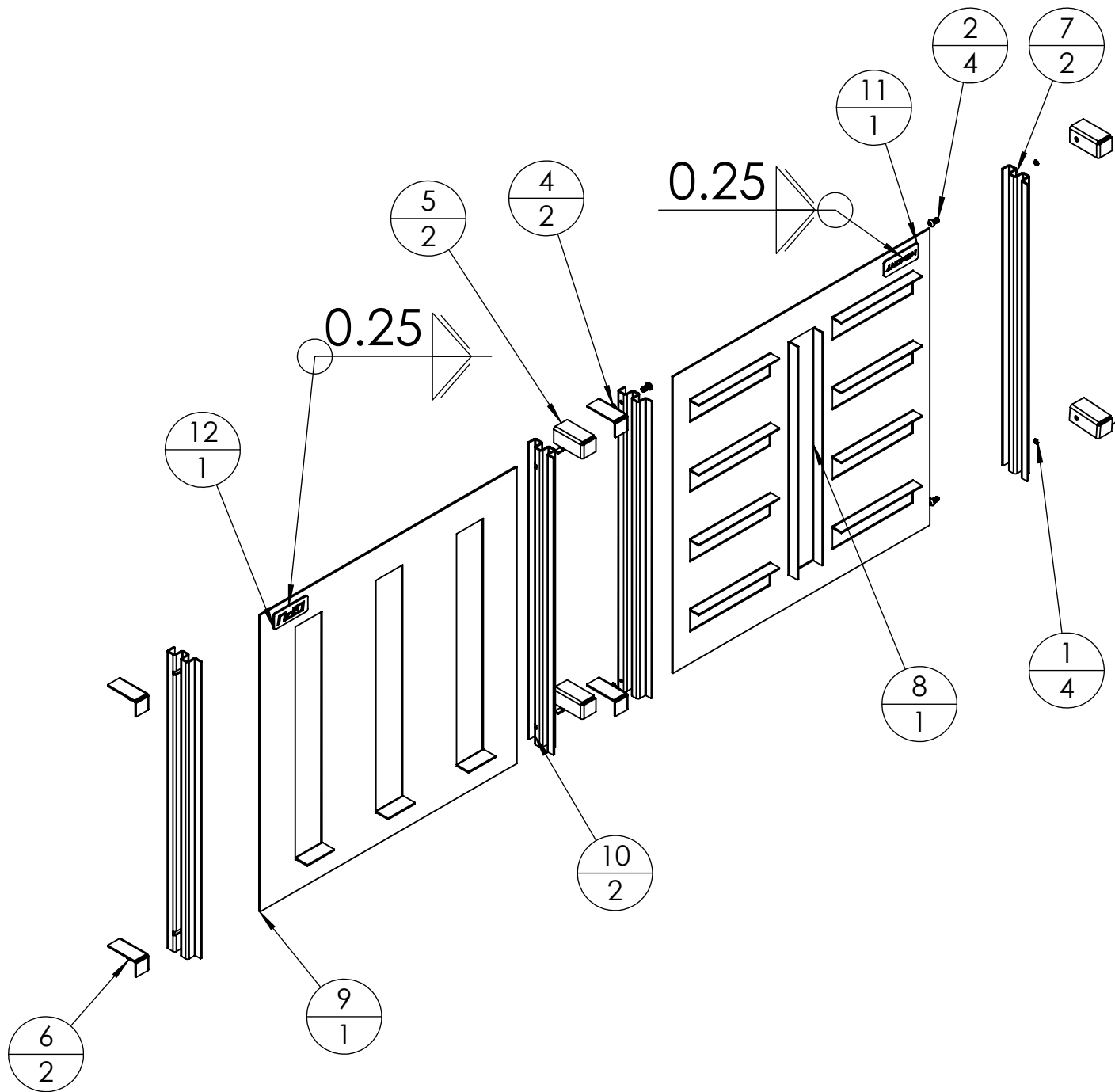


4

3

2

1



ITEM NO.	PART NUMBER	DESCRIPTION	QTY.
1	003-00100-001	NUT, PRESS FIT, 6-32, FOR 0.062 MIN PANEL THICKNESS	4
2	003-00101-001	DRIVE SCREW, BH, M6X1, 12mm, 18-8 SS	4
3	003-00003-001	MOUNT, LEFT, MEMORY SLOT RACK, FULL SERVER RACK	2
4	003-00004-001	MOUNT, RIGHT, MEMORY SLOT RACK, FULL SERVER RACK	2
5	003-00021-001	MOUNT, LEFT, GPU SLOT RACK, FULL SERVER RACK	2
6	003-00022-001	MOUNT, RIGHT, GPU SLOT RACK, FULL SERVER RACK	2
7	003-00074-001	SIDE BRACE, MEMORY SLOT RACK, FULL SERVER RACK	2
8	003-00038-001	SHELF, MEMORY SLOT RACK, FULL SERVER RACK	1
9	003-00047-001	SHELF, GPU SLOT RACK, FULL SERVER RACK	1
10	003-00083-001	SIDE BRACE, GPU SLOT RACK, FULL SERVER RACK	2
11	003-00056-001	NAMEPLATE, MEMORY SLOT RACK, FULL SERVER RACK	1
12	003-00065-001	NAMEPLATE, GPU SLOT RACK, FULL SERVER RACK	1

NOTES: UNLESS OTHERWISE SPECIFIED.

1. PARAMETRIC MODEL. ALL DIMENSIONS FURTHER SPECIFIED IN 003-00104.
2. ASSEMBLY SHALL NOT BE MODIFIED BY ANY PARTY OUTSIDE PAPERLESS PARTS, INC UNLESS WRITTEN OR EXPRESS APPROVAL HAS BEEN PERMITTED FOR THE ASSEMBLY.

UNLESS OTHERWISE SPECIFIED:

DIMENSIONS ARE IN INCHES  
TOLERANCES:  
ANGULAR: MACH  $\pm 1.0^\circ$   
BEND  $\pm 0.5^\circ$   
ONE PLACE DECIMAL  $\pm 0.1$   
TWO PLACE DECIMAL  $\pm 0.05$

PROPRIETARY AND CONFIDENTIAL

THE INFORMATION CONTAINED IN THIS  
DRAWING IS THE SOLE PROPERTY OF  
PAPERLESS PARTS, INC. ANY  
REPRODUCTION IN PART OR AS A WHOLE  
WITHOUT THE WRITTEN PERMISSION OF  
PAPERLESS PARTS, INC IS  
PROHIBITED.

INTERPRET GEOMETRIC  
TOLERANCING PER: ASME Y14.5  
MATERIAL

N/A

FINISH

N/A

DO NOT SCALE DRAWING

NAME  
NM

DATE  
8/30/2024

**paperlessPARTS**

TITLE:  
**SECOND RACK, FULL SERVER  
RACK**

SIZE  
**B**

DWG. NO.  
**003-00104**

REV  
**000**

SCALE: NTS

WEIGHT: SEE MODEL

SHEET 1 OF 1